



GE HealthCare

# Pristina Duo

Your trusted partner in breast care



# Bridging the gap

Reach more patients, in more places, with the care they deserve. It's at the heart of everything you do. And the need has never been greater.


Breast cancer rates continue to rise<sup>1</sup>, and early detection is critical—yet too many women around the world face barriers to routine screening.

Main challenges


Worldwide

1 in 20 women will be diagnosed with breast cancer in their lifetime<sup>1,2</sup>


Globally in 2022

 2.3M cases<sup>3</sup>  
670,000 deaths<sup>3</sup>

By 2050, projected

 3.2M new cases<sup>1,2</sup> annually & 1.1M deaths<sup>1,2</sup>

Middle and low Socio demographic index (SDI) countries

 2.3x<sup>4</sup>  
Incidence more than doubled between 1990 and 2017<sup>4</sup>

In low and middle countries, screening programs are less widespread, which results in lower participation rates and higher mortality.<sup>5</sup>



# Reach more. Care more.

At GE HealthCare, every innovation has a purpose. We believe that every scan, every image, every diagnosis moves us closer to a future with fewer cancer journeys. Our technology is designed to help you expand screening programs and overcome challenges, so more patients can benefit from early detection.

That's why we developed **Pristina Duo™**. Built on the Senographe Pristina™ platform, it's more than a mammography system—it's **your trusted partner**. Pristina Duo works with you to enhance accuracy<sup>6</sup> and save time<sup>7</sup>, driving patient throughput, productivity, and long-term value. Designed with women in mind, the platform prioritizes patient comfort<sup>8</sup> for positive screening experiences.

**With Pristina Duo by your side, reach more and care more.** Expand screening programs and increase access—creating more possibilities for essential breast care.



Pristina Duo

# Your partner for maximizing investment

Speed. Reliability. Endurance. Pristina Duo is built for all of it. The system is designed to efficiently manage a high number of patients, enhancing the benefit of each exam—delivering the performance and reliability your team depends on.

Your key benefits

- Up to 150 patients a day<sup>9</sup>
- High throughput<sup>9</sup>
- An affordable screening solution
- Highly reliable platform, 99% uptime<sup>10</sup>



### Supercharge productivity

96% of users believe the Senographe Pristina platform facilitated faster image acquisition compared to previous system.<sup>7</sup> The platform supports customers with the potential to image up to 150 patients a day.<sup>9</sup>

### Affordable screening solution

The system delivers great value and offers tailored financial options to suit your needs.



### Increase throughput

64% of technologists surveyed agreed that the Senographe Pristina platform enabled an increase in the number of exams completed per day compared to their previous system.<sup>7</sup>

### High reliability

The Senographe Pristina platform is supported by GE HealthCare service contracts and warranty, with Pristina systems demonstrating a 99% uptime.<sup>10</sup>

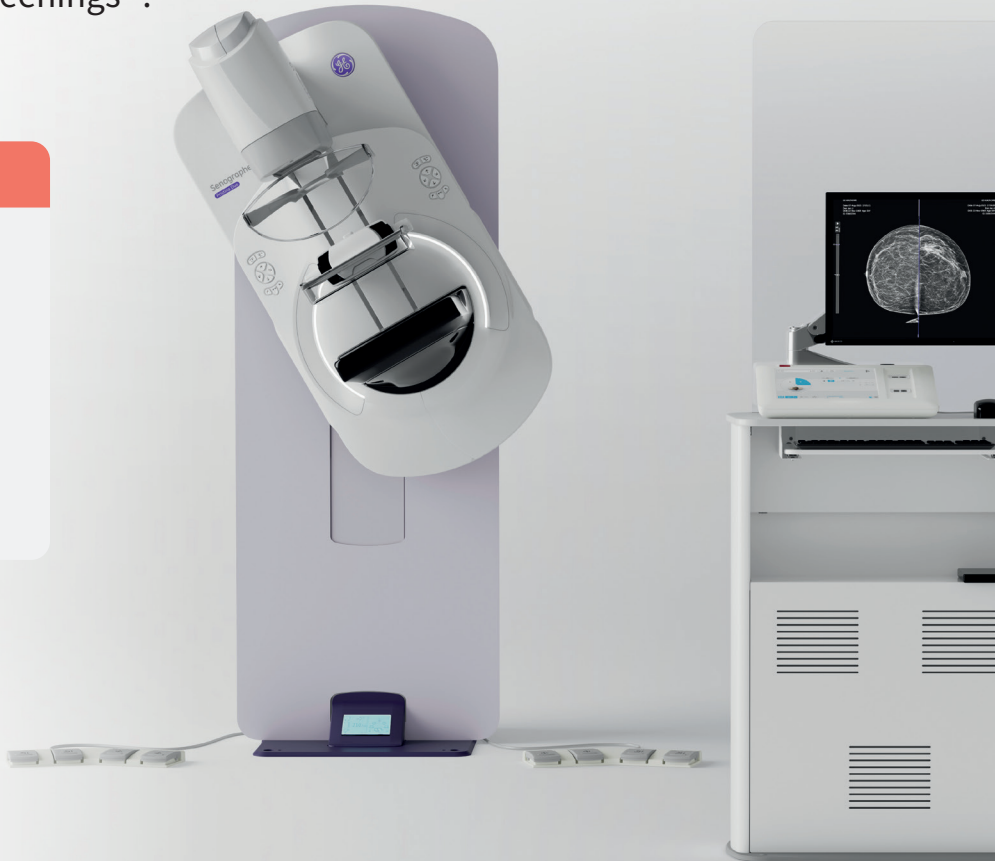
Pristina Duo

# Your partner for patient comfort and care

Pristina Duo isn't just innovative technology, it's a thoughtful step toward making mammography a more positive experience.<sup>8</sup> From comfort-driven design to easier positioning, it helps reduce patient anxiety<sup>8</sup> and shift perceptions—helping motivate patients to return for regular screenings<sup>12</sup>.

Your key benefits

- Reduce anxiety for patients thanks to the gantry design<sup>8</sup>
- Improve comfort<sup>8</sup>
- Easier patient positioning<sup>7</sup>
- Low dose<sup>11</sup>



Senographe  
Pristina Duo



## Reduce anxiety and change perspectives

97% of patients reported feeling less anxious or not anxious at all, thanks to the gantry design.<sup>8</sup>  
83% of patients that would like their next exam to be on the Senographe Pristina platform.<sup>12</sup>

## Improve comfort

70% of patient rated the system more comfortable than previous system.<sup>8</sup>



## Ease positioning

82% of technologists surveyed felt the Senographe Pristina platform design enabled easier patient positioning compared to their previous systems.<sup>7</sup>

## Low dose

The Senographe Pristina 3D STD mode has the lowest dose for all thicknesses among the major systems available in the marketplace.<sup>11</sup>



Pristina Duo

# Your partner for clinical confidence

Confidence starts with clarity.  
Pristina Duo delivers exceptional image  
quality, which can improve accuracy<sup>6</sup>  
and help limit recalls<sup>13</sup>—enabling earlier,  
and decisive cancer detection.

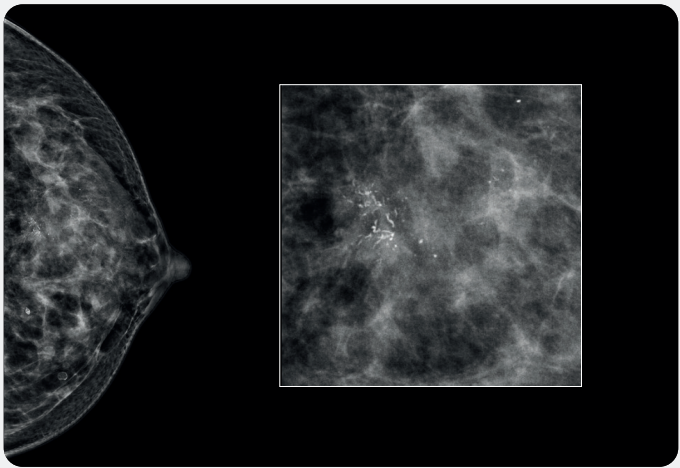
Your key benefits

- High cancer detection rate<sup>14</sup>
- Superior diagnostic accuracy compared to 2D alone<sup>6</sup>
- Limit patient recall<sup>13</sup>



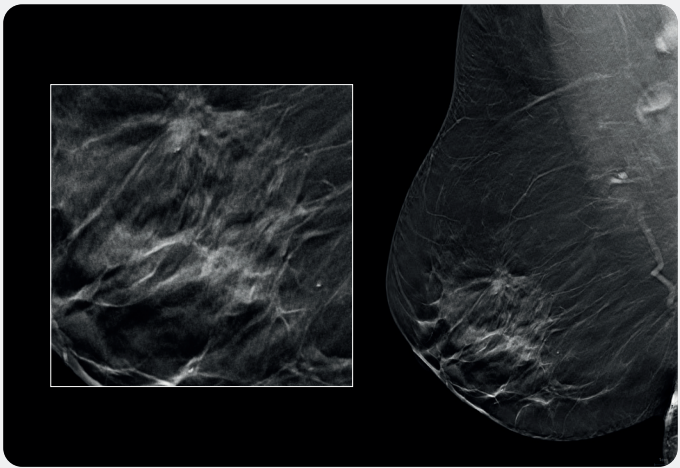
## Early Detection

Utilizing 3D + 2D acquisitions on the Senographe Pristina platform significantly increases the cancer detection rate, compared to 2D alone by up to 90%, with no increase in recall rate.<sup>14</sup>



## Enhance accuracy

The Senographe Pristina platform delivers superior diagnostic accuracy, compared to 2D alone for all breast densities, including dense breasts.<sup>6</sup>



## Limit recalls

3D technology on the Senographe Pristina platform is proven to reduce patient recall rate vs 2D alone.<sup>13</sup>



# Pristina Duo

Your trusted partner in breast care



1. Press release: “Breast cancer cases and deaths are projected to rise globally”, International Agency for Research on Cancer.  
<https://www.iarc.who.int/news-events/breast-cancer-cases-and-deaths-are-projected-to-rise-globally>  
24 February 2025
2. Based on study International Agency for Research on Cancer Analysis Breast cancer cases and deaths are projected to rise globally – IARC. Kim J, Harper A, McCormack V, Sung H, Houssami N, Morgan E, et al. Global patterns and trends in breast cancer incidence and mortality across 185 countries. Nat Med. Published online. 24 February 2025. <https://doi.org/10.1038/s41591-025-03502-3>
3. Fu, M., Peng, Z., Wu, M., Lv, D., Li, Y., & Lyu, S. (2025). Current and future burden of breast cancer in Asia: A GLOBOCAN data analysis for 2022 and 2050. The Breast, 79, 103835.  
<https://doi.org/10.1016/j.breast.2024.103835>.
4. Li, N., Deng, Y., Zhou, L. et al. Global burden of breast cancer and attributable risk factors in 195 countries and territories, from 1990 to 2017: results from the Global Burden of Disease Study 2017. J Hematol Oncol 12, 140 (2019). <https://doi.org/10.1186/s13045-019-0828-0>.  
Journal of Hematology & Oncology.
5. Ferrari A, Jael Herrera D, Van De Veerdonk W, D’haenens W, Ruiz Alejos A, Yimer NB, Orwa S, Van Bos L, Talboom S, Ding L, Goossens M, Van Hal G. Advancing Mammographic Screening Among Underserved Groups: A Systematic Review and Meta-Analysis of Intervention Strategies to Increase Breast Cancer Screening Uptake. <https://pmc.ncbi.nlm.nih.gov/articles/PMC12006734/>.
6. GE HealthCare DBT delivers superior diagnostic accuracy demonstrated in a reader study comparing the ROC AUC of GE screening protocol (V-Preview + 3D CC/MLO with 3D in STD mode) to that of 2D FFDM alone. FDA PMA P130020.
7. IPSOS Technologists Study sponsored by GE HealthCare, conducted with 50 users in Japan and the European Union, from July 2017 to April 2018.
8. IPSOS Patient Satisfaction Study sponsored by GE HealthCare, conducted with 315 patients across 2 sites, in Europe, February 2017.
9. Analysis of 2,654 systems covering >2 million exams, Pristina Duo supports customers with the potential to image up to 150 patients a day. Results may vary according to hospital size, working days, working hours, etc. there can be no guarantee that each Pristina system will achieve the same results.
10. Analysis of the 42,543 Service requests on Pristina platform systems under Contract or Warranty from January 2022 to September 2024. Results may vary according to hospital size, working days, working hours, etc. there can be no guarantee that each Pristina system will achieve the same results.
11. Phantom measurements as of July 2024. Senographe Pristina with default value STD mode. Dose comparison based on NHS Breast Screening Programme equipment reports.  
<https://medphys.royalsurrey.nhs.uk/nccpm/?s=technicalreports>. Systems comparison in the USA.
12. IPSOS Patient Satisfaction Study sponsored by GE Healthcare, conducted with 215 patients across 1 site in Italy, February 2017.
13. At equivalent sensitivity. Superior diagnostic accuracy demonstrated in a reader study comparing the ROC AUC of GE HealthCare screening protocol (V-Preview + 3D CC/MLO with 3D in STD mode) to that of 2D FFDM alone. V-Preview is the 2D synthesized image generated by GE HealthCare Seno Iris mammography software from GE HealthCare DBT images. FDA PMA P130020.  
<http://www.accessdata.fda.gov/scripts/cdrh/cfdocs/cfpma/pma.cfm?id=P130020>.
14. Digital Mammography versus Digital Mammography plus tomosynthesis for Breast Cancer Screening: The Reggio Emilia Tomosynthesis Randomized Trial.  
<https://pubs.rsna.org/doi/10.1148/radiol.2018172119>. Applicable for Europe only.

## About GE HealthCare Technologies Inc.

GE HealthCare is a leading global medical technology, pharmaceutical diagnostics, and digital solutions innovator, dedicated to providing integrated solutions, services, and data analytics to make hospitals more efficient, clinicians more effective, therapies more precise, and patients healthier and happier. Serving patients and providers for more than 125 years, GE HealthCare is advancing personalized, connected, and compassionate care, while simplifying the patient's journey across the care pathway. Together our Imaging, Ultrasound, Patient Care Solutions, and Pharmaceutical Diagnostics businesses help improve patient care from diagnosis, to therapy, to monitoring. We are a \$19.6 billion business with approximately 51,000 colleagues working to create a world where healthcare has no limits.

Follow us on LinkedIn, X (formerly Twitter), and Insights for the latest news, or visit our website <https://www.gehealthcare.com/> for more information.

Pristina Duo is a commercial offering of Senographe Pristina™. All features and options may not be available in all countries. Please check with your local GE HealthCare representative for availability.

© 2025 GE HealthCare. GE is a trademark of General Electric Company used under trademark license. Pristina Duo and Senographe Pristina are trademarks of GE HealthCare.

JB33409XX



GE HealthCare