



GE HealthCare



OEC One ASD

Images within reach



OEC One ASD

Image quality is essential across surgical procedures. With OEC One ASD experience the image quality expected from OEC image processing and the convenience needed in a compact, all-in-one mobile C-arm for images within reach.

Reliable images

See clear patient images captured from an aSi flat panel detector and a 4K UHD display.

Convenient access

Achieve the imaging you need with intuitive user interface and modern imaging features.

All-in-one workflow

Optimize procedure room space with the compact, all-in-one C-arm design.



Reliable images

With the OEC One ASD, experience the detailed image quality expected from OEC C-arms. View high resolution images clearly on the Ultra-High-Definition (UHD) display and see more with modern imaging features.

View anatomy

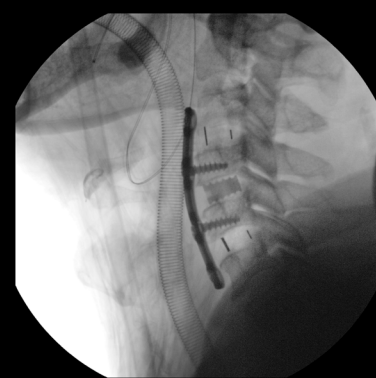
Capture images and review as needed with advanced features. See detail with Live Zoom up to 4X on imaged anatomy during live fluoro or Cine with no change in dose. Minimize retakes with Fluorostore to save and review most recent exposure.

Display clearly

Easily see large 30 cm (11.8 inch) Live and Reference images presented from aSi flat panel detector to 27-inch 4K UHD display. The Squirle-shaped images retain 100% of data when rotated for no cropped view.

Optimize imaging

Depend on OEC image processing to get the images you need with software that automatically optimizes settings for point and shoot simplicity. See imaged data from detector to display with larger field of view, compared to OEC One 9" Image Intensifier.



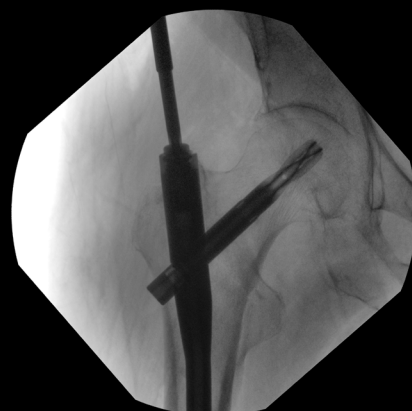
Anterior Cervical Discectomy



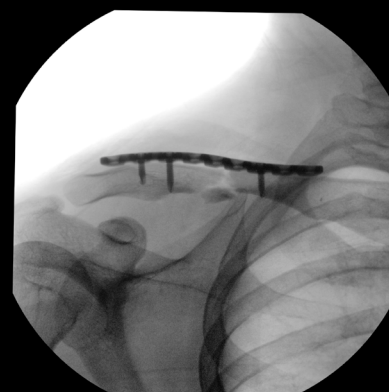
Left Tibial Plateau ORIF



Right Metatarsal ORIF



Intramedullary Nailing of
Right Femur



Right Clavicle ORIF

Convenient access

Conveniently capture images for a variety of procedures with the simple point-and-shoot functionality of OEC One ASD. Aid surgical imaging with modern planning and positioning features.



Easily transport

One-piece system simplifies moving from room to room with 5-minute standby power to transport without restarting the C-arm. Optimize space with a small compact C-arm that fits in tight spaces or small operating rooms.

Plan purposefully

Experience efficient procedural planning with Digital Pen, annotations, and measurements. Draw bright blue lines on image display to outline device or anatomy of interest. Measure distance and angles, and annotate to plan procedures, such as implant placement.

Position accurately

Bring the 4K UHD display closer to surgical field and position with five ranges of motion for easy viewing at surgeon's line of sight. Achieve deep C-arm angles with 55° overscan and easily lock position with radial dial brakes during procedures.



All-in-one workflow

Streamline communication with the OEC Touch control panel designed to facilitate timely image adjustments. From a small pain management office to a crowded OR, optimize space and clinical workflow with OEC One ASD.

Synchronize workflow

The OEC Touch control panel presents a live image that mirrors the surgeon's display. Quickly access needed commands (laser aimers*, Live Zoom, Digital Pen, and Fluorostore) and swipe between four screens with intuitive OEC icons for easy operation.

Protecting data

OEC One ASD is designed to ensure Patient Health Information (PHI) remains confidential, while managing user access to the system. OEC One ASD provides data encryption at rest, runs on a Linux-based operating system, and enables users to set password requirements.

Manage images

For patient data management, images and dose reports can be exported via USB ports and DICOM wired or wireless options. With standby power, avoid loss of patient image data when power is interrupted or lost to the C-arm.



* Optional
Availability of select models, configurations, and options varies by country.
Please contact your local sales representative.
510(k) pending at the US FDA. Not available for sale in the United States.

OEC One ASD

All-in-one

Small footprint
Fits in tight spaces

Imaging precision

1:1 image detail from aSi flat panel
detector (ASD) to 4K 27" UHD Display

Field of View

21 cm aSi flat detector

View more anatomy

11.8" Squircle images
100% preserved when rotated

Live Zoom

View 4X image size with Live Zoom

View again

Review most recent exposure
with Fluorostore

Dose control

Finger-removable anti-scatter grid
Low dose mode

Extend reach

55° Overscan
95° Underscan



View comfortably

Adjust display to line of sight with articulating arm
Flexibility with OEC Display cart*

Efficiently position

Color-coded radial dial brakes
Long C-arm handles
Green laser aimers*

Plan purposefully

With Digital Pen, annotations and
measurements

Standby power

5-minute standby data protection and
transport power

Save confidently

150,000 image storage

Efficient power

2.5 kW
40 kHz frequency
Smart Technique heat management

Secure

Linux-based operating system

Wireless options*

Footswitch
DICOM
Printing

* Optional
Availability of select models, configurations, and options varies by country.
Please contact your local sales representative.
510(k) pending at the US FDA. Not available for sale in the United States.

Images within reach

Orthopedic • Spine • General Surgery • Urology • Pain Management



510(k) pending at the US FDA. Not available for sale in the United States.

Availability of select models, configurations, and options varies by country.
Please contact your local sales representative.

GE HealthCare reserves the right to make changes in specifications and features shown herein, or discontinue the product described at any time without notice or obligation. Contact your GE HealthCare representative for the most current information. GE OEC Medical Systems, Inc., going to market as GE HealthCare. OEC is a trademark of GE HealthCare. GE is a trademark of General Electric Company used under trademark license. ©2024 GE HealthCare. All rights reserved.

JB26338XX